

WORSHIP LEADERS for TODAY ~ August 7

9 AM: Greeter: Savanna Harris

Host/Hostess: Nicole Harris

Worship Leader: Clay Weir

Power Point: the Harveys

11 AM: Usher: Hartwell Lutz

Worship Leader: Larry Clark

Reader: Joanie Kerr

For this coming week --August 7-13

Care Center Pick-up: Kay Hanks

WAVE Team: Jane Rutledge

Worship leader schedules are available at

www.bigcovechurch.org

Members: Kenton Stephens; Ann Sublett; Brenda and Don Copeland; Robyn Birdsong; Merrie Duncan; Sandy Young; Mary Burnette

Friends & Relatives: Bud Deadmond (Elizabeth Butz' father); Charlie Roell (Diane Lee's brother-in-law); Martha Wells (Kay Gentle's cousin's wife); Faye Price (Kay Hanks' sister); Jerry Price (Kay Hanks' brother-in-law); Will Lee (Tennent Lee's son); Jillian Shandra (Melinda Harvey's daughter); Janie Putnam (friend of Gail Birdsong); Beulah Wooten & Carol Loggins (Julie Loggins' grandmother & mother)

The Church: The Pastor Nominating Committee; Rev. Dr. Mel Strain; Big Cove Presbyterian; the Session; Rev. Dr. Tammy Gregory Brown, Executive Presbyter; North Alabama Presbytery

Military & International: All our service men and women.

Our Nation: President Obama and our representatives

Big Cove Missions & Ministries: The CARE Center; The Vine Pastoral Counseling Center; The Presbyterian Home for Children

HAPPY BIRTHDAY/ANNIVERSARY this week!

Linda McWilliams on August 7th

Betty Finley on August 9th

Susan Bridges on August 11th

Mel Strain on August 11th

Ray & Vicki Waldrop on the 9th

Arnold & Diane Puckett on the 12th

ANNOUNCEMENTS

We welcome **Jacque Cordle**, the Director of Resource Development at the Presbyterian Home for Children in Talladega, who is preaching for us today.

The **Christian Exploration gathering** for adults resumes today between the worship services

Centering Prayer will meet Mon Aug 8 at 6:00.

Prayer Group will meet at 11:30 Wed Aug 10. Please note the new time; if you want to try it out, come and bring a sandwich or something to munch on for lunch!

Wednesday Immersion study/discussion will meet at 6 on Aug 8.

Help support the **Presbyterian Home for Children** by adding to Big Cove's sponsorship funds for the **Children's Home Challenge** Bike Ride on Oct 15. If each member puts aside \$1-\$2 per week we will reach our goal of being a Sprint Sponsor. Checks can be made payable to BCPC with "PHFC Bike Ride" on the "Memo" line. All contributions need to be received by Sun, Sept 11th.

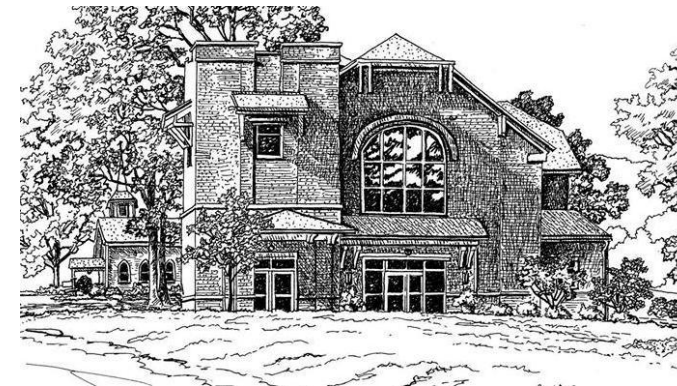
Volunteers are also needed for the bike ride, and sign-up sheets are on the table at the back of the sanctuary or in the narthex. Please consider donating your time to work at a rest stop or assist with other needs on Oct 15th from 7:00 AM until about 3:00 PM. All volunteers should sign up by Sun, Oct 2 so PHFC will know how many Big Cove volunteers will be there to help. Please indicate on the sign-up sheet if you have a camp chair (or chairs) and/or a popup canopy tent that can be used for the event.

Flyers and sponsorship forms are by the volunteer sign-up sheets.

If you have any questions or concerns about the **Children's Home Challenge**, please contact Julie Loggins.

BIG COVE CHRISTIAN EDUCATION CELEBRATION: The PCUSA Christian Education Week begins Sept 11, 2016. Big Cove will offer a celebration at 10:00 a.m. Sept 11. The celebration will begin in the worship center, where the CE Team will introduce teachers and upcoming study topics; then you will go to your classrooms. We invite EVERYONE (children, teens, and adults) to come see, hear, and celebrate.

WELCOME TO BIG COVE PRESBYTERIAN CHURCH (USA)



August 7, 2016
Third Sunday after Pentecost

"First Light" Worship – Sundays at 9 AM

Guitarist: John Isom

Percussionist: Jimmy Jones

Traditional Worship – Sundays at 11 AM

Music Director and Pianist: Jervon Niska

Stated Supply Pastor Rev. Dr. Mel A. Strain
Nursery Available

www.bigcovechurch.org

256-533-5570

